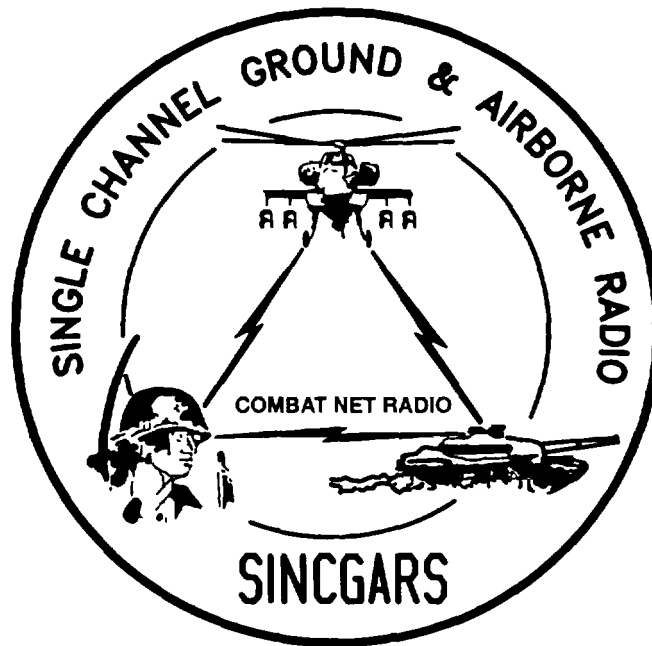


---

TECHNICAL BULLETIN



INSTALLATION INSTRUCTIONS FOR  
INSTALLATION KIT,  
ELECTRONIC EQUIPMENT, MK-2354/VRC  
(NSN 5895-01-3094602) (EIC: N/A)  
TO PERMIT INSTALLATION OF RADIO SET  
AN/VRC-89/91 SERIES  
INTO  
COUNTERMEASURES SET AN/TLQ-17A(V)3

---

Approved for public release; distribution is unlimited.

HEADQUARTERS, DEPARTMENT OF THE ARMY

1 SEPTEMBER 1993

**INSTALLATION INSTRUCTIONS FOR  
INSTALLATION KIT,  
ELECTRONIC EQUIPMENT MK-2354/VRC  
(NSN 5895-01-309-4602) (EIC: N/A)  
TO PERMIT INSTALLATION OF RADIO SET  
ANIVRC-9/91 SERIES  
INTO  
COUNTERMEASURES SET ANITLQ-17A(V)3**

REPORTING OF ERRORS AND RECOMMENDING IMPROVEMENTS

You can help improve this manual. If you find any mistakes or if you know of a way to improve the procedures, please let us know. Mail your letter, DA Form 2028 (Recommended Changes to Publications and Blank Forms), or DA Form 2028-2 located in the back of this manual direct to: Commander, US Army Communications-Electronics Command and Fort Monmouth, ATTN: AMSEL-LC-LM-LT, Fort Monmouth, New Jersey 07703-5007.

In either case, a reply will be furnished direct to you.

**TABLE OF CONTENTS**

Subject	Section	Page
Scope .....	0.1	1
General Information .....	0.2	1
Maintenance Forms, Records, and Reports .....	0.3	1
Reports of Maintenance and Unsatisfactory Equipment.....	0.3.1	1
Report of Packing and Handling Deficiencies.....	0.3.2	1
Discrepancy in Transportation Deficiency Report (TDR) (SF 361).....	0.3.3	1
Consolidated Index of Army Publications .....	0.4	1
Purpose of Installation .....	1	2
End Item or System to be Modified.....	2	2
Application Times.....	3	2
Time for Completion of Installation .....	3.1	2
Time for Installation of One Assembly or Component .....	3.2	2
Preparation for Installation .....	4	2
Preparation of Shelter .....	4.1	2
Preparation of MK .....	4.2	2
MK, Distribution, and Consumables.....	4.3	3
Tools and Test, Measurement, and Diagnostic Equipment (TMDE) Required.....	4.4	7
Installation Procedures .....	5	8
Installation of Antenna AS-3900NRC (antenna).....	5.1	10
Installation of Antenna Base .....	5.1.1	10
Installation of Top Antenna Assembly.....	5.1.2	12
(mounting base).....	5.2	13
Installation of Mounting Base, Electrical Equipment MT-6352NRC .....	5.3	15
Installation of Cables.....	5.4	18
Installation of MK-2499NRC .....	5.4	18
Post-Installation and Checkout .....	5.5	18
Appendix A. References .....		A1

**LIST OF ILLUSTRATIONS**

Figure	Title	Page
4-1	MK Illustrated Parts List .....	5
4-2	TSEC/KY-57 Illustrated Parts List .....	6
5-1	MK and Radio Installation .....	8
5-2	Antenna Base Installation.....	10
5-3	Top Antenna Assembly Installation.....	12
5-4	Mounting Base Installation .....	13
5-5	Cable Installation.....	15
5-6	Cable Diagram .....	19

**LIST OF TABLES**

Number	Title	Page
4-1	MK Parts List for Installation of Radio Set ANNRC-89/91 Series .....	4
4-2	Additional Items Required for Installation When Using RT-1439NRC .....	6

## 0.1 SCOPE

This technical bulletin provides Installation Instructions for Installation Kit, Electronic Equipment, MK-2354/VRC, commonly referred to as the Mounting Kit (MK). The MK shall be installed into the following type of shelter(s):

- Countermeasures Set AN/TLQ-17A(V)3

The MK is used for installation of radio set components at field locations. The information contained in this technical bulletin is the official authorization to perform the installation at the unit maintenance level.

### NOTES

- This technical bulletin is not an authorization for requisition or turn-in of shelters.
- This technical bulletin does not establish quantity or types of shelters assigned to using units.

This technical bulletin does not contain information on the maintenance or replacement of the MKs. This information is contained in the MAC of TM 11-5820-890-20-2, TM 11-5820-890-20-4 and RPSTL of TM 11-5820-890-20P.

## 0.2 GENERAL INFORMATION.

The MK becomes operable when all the radio set components are installed in the shelter and correct power is supplied. Refer to TM 11-5820-890-20-1 or TM 11-5820-890-20-4 for installation, Operational (OP) Check instructions, and required maintenance procedures. Refer to TM 11-5820-890-20P for repair parts.

Included in the Radio Set AN/VRC-89/91 Series are:

- Radio Set AN/VRC-89/91 (for RT-1439/VRC)
- Radio Set AN/VRC-89A1/91A (for RT-1523(C)/U)

## 0.3 MAINTENANCE FORMS, RECORDS, AND REPORTS.

**0.3.1 Reports of Maintenance and Unsatisfactory Equipment.** See section 4.2.2.3 for information.

**0.3.2 Report of Packaging and Handling Deficiencies.** See section 4.2.2.1 for information.

**0.3.3 Discrepancy in Transportation Deficiency Report (TDR) (SF361).** See section 4.2.2.2 for information.

## 0.4 CONSOLIDATED INDEX OF ARMY PUBLICATIONS.

Refer to the latest issue of DA Pam 25-30 to determine whether there are new changes, or additional publications pertaining to the equipment.

**1. PURPOSE OF INSTALLATION.**

The Installation Kit, Electronic Equipment, MK-2354/VRC (MK) contains the items needed to mount Radio Set AN/VRC-89A/91A in a Countermeasures Set AN/TLQ-17A(V)3 (shelter). If Radio Set AN/VRC-89/91 is to be installed, communications security equipment (TSEC/KY-57) will need to be installed also. See section 5.4 for information.

**2. END ITEM OR SYSTEM TO BE MODIFIED.**

Not applicable.

**3. APPLICATION TIMES.**

**3.1 Time for Completion of Installation.** Using two people, a total of 3.5 work hours is required. Typical shelter downtime is 3.5 hours.

**3.2 Time for Installation of One Assembly or Component.** The following table lists the time required to install one component. All times have been rounded off to the nearest half hour. The sum of these times will not reflect the typical shelter downtime.

ITEM	SECTION	TIME
Antenna AS-3900/VRC	5.1	0.5
Mounting Base, Electrical Equipment MT-6352/VRC	5.2	0.5
Cables	5.3	1.0

**4. PREPARATION FOR INSTALLATION.**

This section explains how to prepare the shelter and MK for installation.

**4.1 Preparation of Shelter.** To prepare the shelter for installation, insure that the site includes adequate lighting and a power source when drilling is required. Inspect the shelter for damage that could affect installation. Have any such damage repaired before installing MK.

**4.1.1 Items to be Removed.** Remove existing AN/VRC-12 radio family installation kit/harness. See TM 11-5820-401-20-2 for removing items used with intercom systems, or TM 11-5820-401-20-1 (used without intercom systems), and TM 32-5895-005-24-5.

**4.1.2 List of Items to be Retained.** Not applicable.

**4.2 Preparation of MK.** To prepare MK, unpack, inspect and check inventory.

**4.2.1 Precautions During Handling.** Observe these steps to prevent equipment damage.

- a. Keep dust covers in place on connectors.
- b. Do not disassemble or modify parts in MK unless authorized to do so.
- c. Keep mounting hardware covered and protected until needed.
- d. When exposed to moisture, rain or salt water, keep all parts dry to prevent corrosion.

## **4.2.2 Unpack and Inspect Equipment.**

**4.2.2.1 Inspect Packaging for Evidence of Damage.** Any shipping damage should be reported on SF364 Report of Discrepancy (ROD) as prescribed in AR 735-11-2/DLAR 4140.55/NAVMATINST 4355.73A/AFR 400-64/MCO 4430.3F.

**4.2.2.2 Unpack and Inventory MK.** If any item is missing, fill out and forward Transportation Deficiency Report (TDR) (SF361) as described in AR 55-38/NAVSUPINST 4610.33C/AFR 75-18/MCO P4610.19D/DLAR 4500.15.

**4.2.2.3 Examine Each Item for Damage.** If any item is damaged, fill out and forward SF364 Report of Discrepancy (ROD) as prescribed in AR 735-11-2/DLAR 4140.55/NAVMATINST 4355.73A/AFR 400-64/MCO 4430.3F. All damages should be reported as prescribed by DA Pam 738-750, as contained in Maintenance Management Update.

## **4.3 MK, Distribution, and Consumables.**

**4.3.1 Items Supplied in MK and/or Required for Installation.** Use Table 4-1 and figure 4-1 to identify and inventory MK parts supplied to install Radio Set AN/VRC-89/91 Series. Refer to Table 4-2 and figure 4-2 to identify additional items required to install when using RT-1439/VRC.

### **4.3.2 Distribution and Issue Instructions.**

- a. US Forces: Do not requisition MK. They will be shipped automatically.
- b. US Army Depots: Requisition MK through supply channels.
- c. Multiservice: Instructions shall be included for multiservice modifications.
- d. MAP/MAS Countries: Instructions shall be provided for MAP/MAS countries.

Table 4-1. MK Parts List for Installation of Radio Set ANIVRC-89/91 Series

NSN	ITEM DESCRIPTION AND PART NUMBER	QUANTITY IN MK	SMR CODE	FIGURE ITEM NO.
5985-01-297-2971	Antenna AS-3900/VRC (A3017899-1)	2	PAOOF A	4-1, 2
5305-00-847-1159	Screw, Cap, Hexagon (3/8-16 x 1 3/4 in) MS3507-365	8	PAOZZA	
5310-00-913-8881	Nut, Hexagon (3/8-16 in) MS51971-3	8	PAOZZA	4-1, 1
5310-00-061-1258	Washer, Lock, Internal/External-Toothed (3/8 in) MS45904-76	16	PAOZZA	
5310-00-889-2527	Washer, Lock, Internal/External-Toothed (5/16 in) MS45904-72	4	PAOZZA	4-1, 7
5306-00-225-9086	Bolt, Machine (5/16-24 x 5/8 in) MS90726-31	2	PAOZZA	
5330-01-205-2864	Gasket (A3013655-1)	2	PAOZZA	4-1, 6
5975-01-188-8873	Mounting Base, Electrical Equipment MT-6352/VRC (A3013367-1)	1	PAOOF A	
5306-00-225-9089	Bolt, Machine (5/16-24 x 1 in) MS90726-34 (3 Not Used)	5	PAOZZA	4-1, 6
5310-00-889-2527	Washer, Lock, Internal/External-Toothed (5/16 in) MS45904-72 (2 Not Used)	10	PAOZZA	
5310-00-880-7746	Nut, Hexagon (5/16 - 24 in) MS51968-5 (1 Not Used)	5	PAOZZA	4-1, 8
5995-01-303-4951	Cable Assembly, Special Purpose, Electrical CX-13313/VRC (2 FT, 7 IN) (A3018360-1)	1	PAOZZA	
5995-01-219-9528	Cable Assembly, Radio Frequency CG-3855/VRC (3 FT, 0 IN) (A3014031-1)	1	PAOZZA	4-1, 5
5995-01-225-1659	Cable Assembly, Radio Frequency CG-3855/VRC (2 FT, 0 IN) (A3014031-9)	1	PAOZZA	
	Cable Assembly, W40 C5136263	1	PAOZZA	4-1, 3
5306-00-225-9098	Bolt, Machine (5/16-24 x 2 3/4 in) MS90726-43	2	PAOZZA	
4020-01-341-8795	Fiber Rope Assembly, Single Leg (A3167672-1)	2	PAOZZA	4-1, 4
	Mount, Antenna - Roadside C5136260	1	XBOZZA	
	Mount Plate, Antenna - Roadside C5136261	1	XBOZZA	4-1, 5
	Schematic Plate, Mission Support C5136264	1	XBOZZA	
5305-00-021-3620	Screw, Cap, Hexagon (1/4-20 x 7/8 in) MS35307-307	2	PAOZZA	4-1, 4
5305-00-021-3668	Screw, Cap, Hexagon (1/4-20 x 1 1/4 in)	3	PAOZZA	
5975-00-111-3208	Strap, Tiedown, Electrical Components MS3367-5-9	10	PAOZZA	4-1, 4
5310-00-889-2528	Washer, Lock, Internal/External-Toothed (1/4 in) MS45904-68	9	PAOZZA	

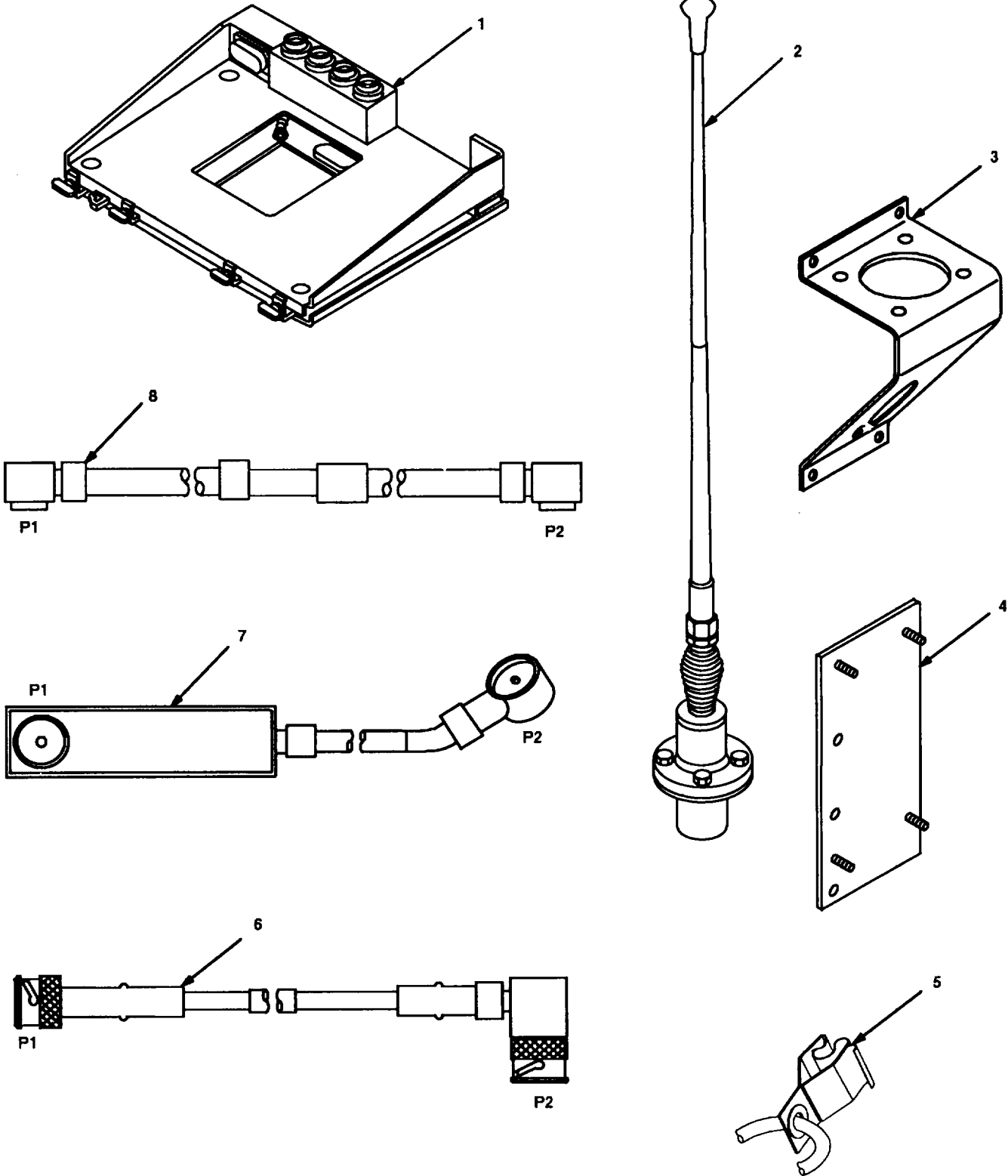


Figure 4-1. MK Illustrated Parts List



Table 4-2. Additional Items Required for Installation When Using RT-1439/VRC

NSN	ITEM DESCRIPTION AND PART NUMBER	QUANTITY IN MK	SMR CODE	FIGURE ITEM NO.
5995-01-222-4210	Cable Assembly, Special Purpose, Electrical CX-13293/VRC (4 FT, 0 IN) (A3014034-1)	1	PAOZZA	4-2, 1
5995-01-226-5482	Cable Assembly, Power, Electrical CX-13303/VRC (2 FT, 6 IN) (A3014040-5)	1	PAOZZA	4-2, 2
5306-00-225-9098	Bolt, Machine (5/16-24 x 2 3/4 in) MS90726-43	2	PAOZZA	

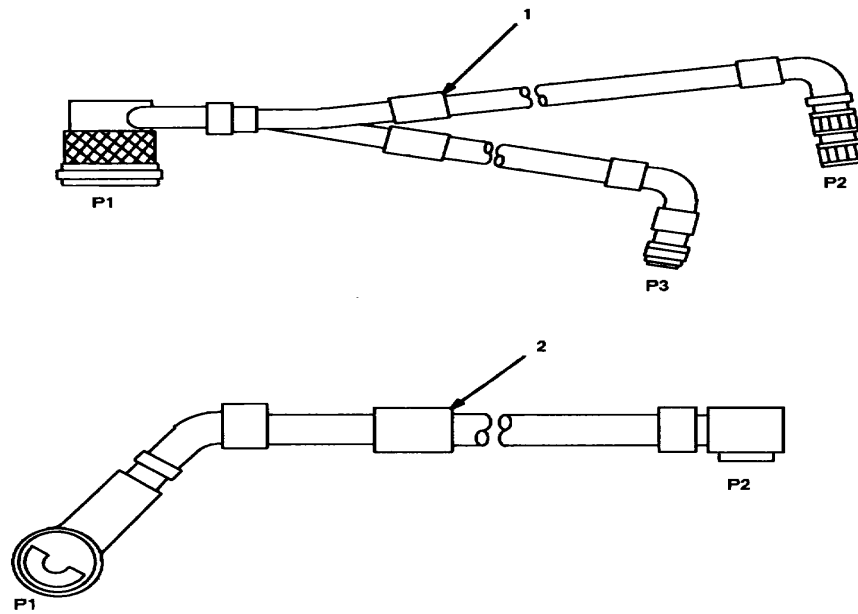


Figure 4-2. TSEC/KY-57 Illustrated Parts List

**4.3.3 Consumable Materials.** The table below lists materials required for installation but not supplied with MK.

NSN	NOMENCLATURE
8040-00-117-8510	Adhesive-Sealant, Clear, RTV
6850-00-880-7616	Silicone Compound, MIL-S-8660

**4.4 Tools and Test, Measurement, and Diagnostic Equipment (TMDE) Required.** The following tools and TMDE are needed for installation.

NOMENCLATURE	NSN	QUANTITY
Radio Set*	1	
Pocket Knife, Electrician's	5110-00-240-5943	1
Screwdriver, No. 2 Point Phillips, 4 in	5120-00-234-8913	1
Screwdriver, 1/4 in Flatblade, 4 in	5120-00-222-8852	1
Pliers, Round Nose	5120-00-240-6172	1
Pliers, Diagonal Cutting	5110-00-965-0974	1
Wrench, Open/Box: 7/16 in	5120-00-228-9505	1
1/2 in	5120-00-228-9506	
9/16 in	5120-00-228-9507	1
Handle, Socket Wrench	5120-00-240-5364	1
Socket: 7/16 in	5120-00-227-6703	1
1/2 in	5120-00-237-0977	1
9/16 in	5120-00-227-6704	1

\*Use radio issued with your shelter if available.

**5. INSTALLATION PROCEDURES.**

This section describes where and how to install MK items in the shelter. See figure 5-1 for an overall view of where the MK equipment, as well as radio components, typically will be installed. When installing MK equipment, be sure to read and follow instructions and illustrations carefully. If Radio Set AN/VRC-89/91 is to be installed, communications security equipment (TSEC/KY-57) will need to be installed also. See section 5.4 for information.

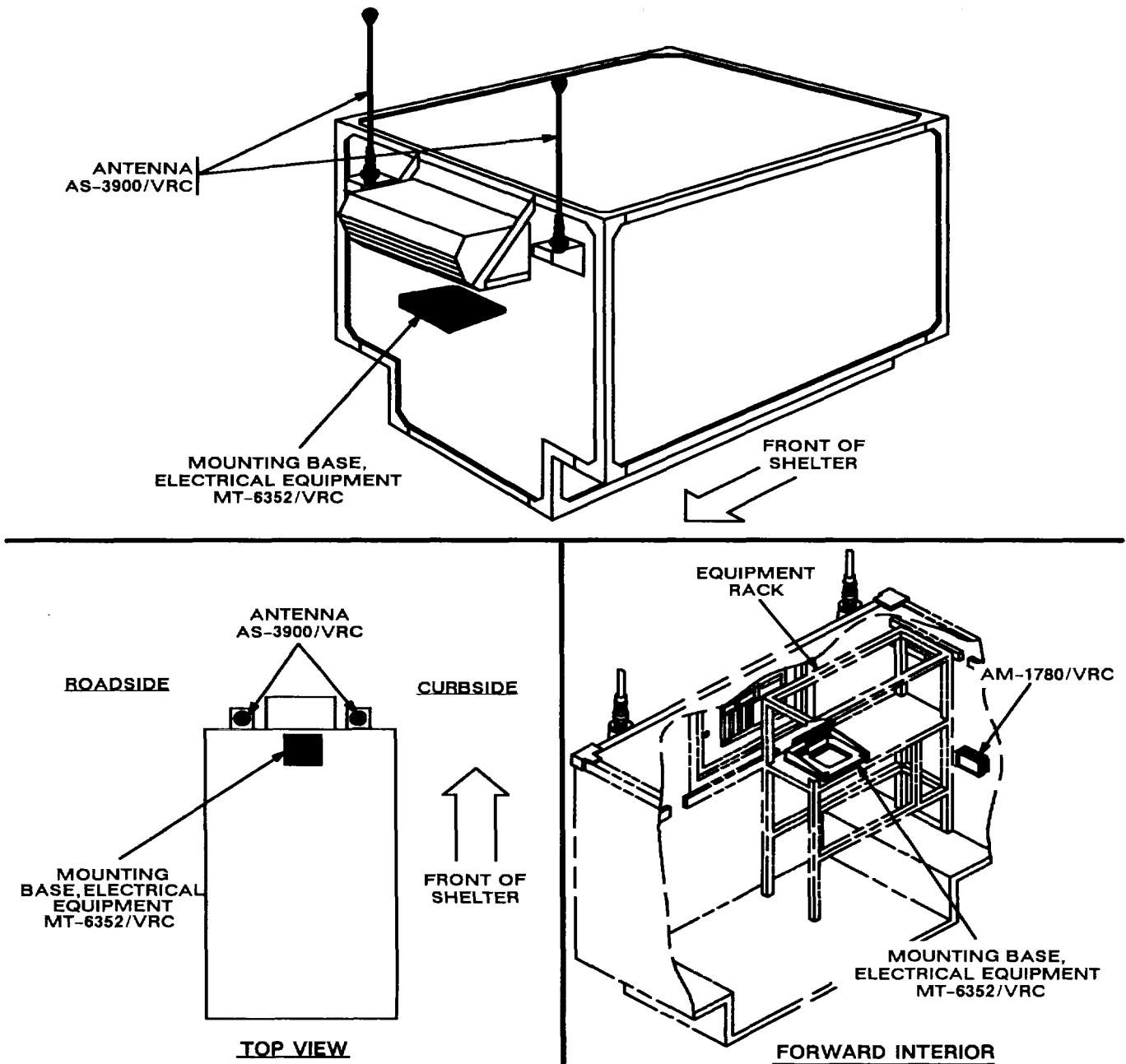
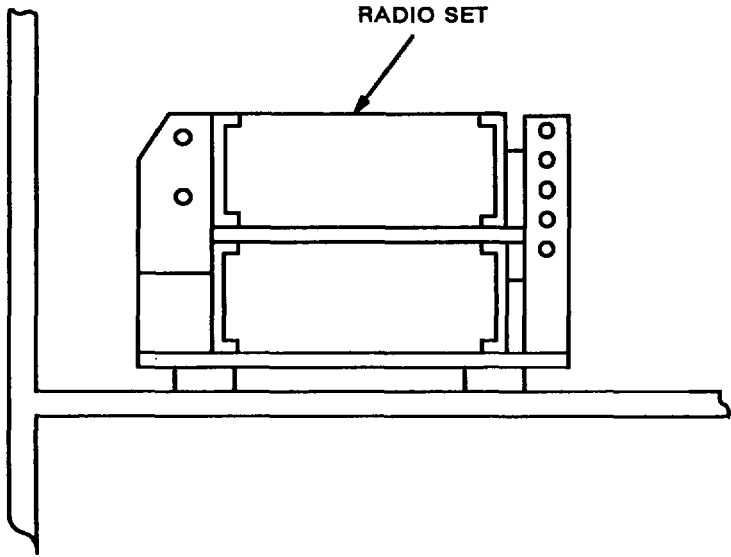


Figure 5-1 (1). MK and Radio Installation: MK Equipment Locations

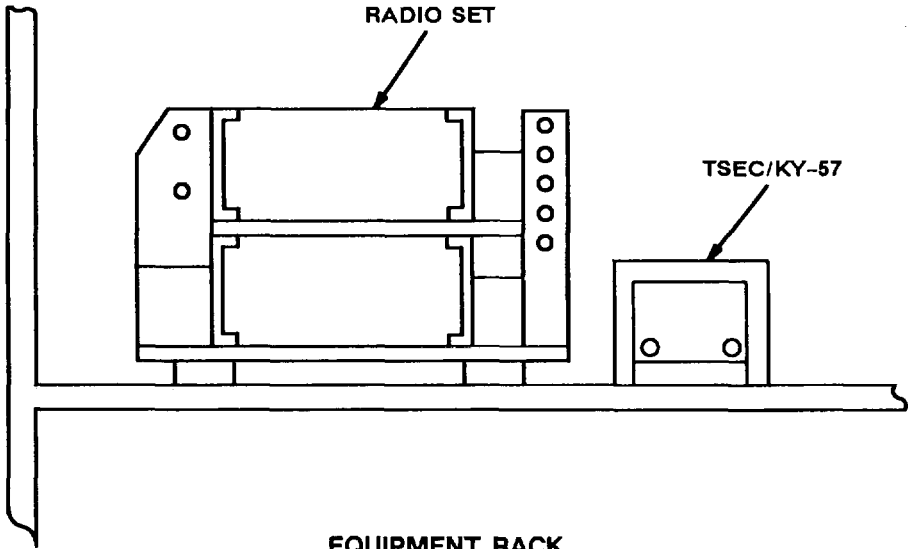
5. INSTALLATION PROCEDURES. Continued

**INSTALLATION  
FOR  
AN/VRC-89A/91A**



**EQUIPMENT RACK**

**INSTALLATION  
FOR  
AN/VRC-89/91**



**EQUIPMENT RACK**

Figure 5-1 (2). MK and Radio Installation: Radio Equipment Locations

**5.1 Installation of Antenna AS-3900/VRC (antenna).** Use the following procedures to install both antennas. See figures 5-1 (1) for locations.

**5.1.1 Installation of Antenna Base.** Perform steps a thru i to install front roadside antenna base. Perform steps f thru i to install front curbside antenna base.

ITEM	ACTION	REMARKS
------	--------	---------

**NOTE**

Apply a thin coat of adhesive-sealant to both sides of each internal/external-toothed (IET) washer during installation, and to the area of contact where IET washer is to be placed.

- |    |   |   |                        |
|----|---|---|------------------------|
| a. | Antenna mount plate (3)                         | Place against front roadside wall and align holes with matching hole pattern near existing connector adapter. See figure 5-2 (1). |                        |
| b. | Three cap screws (6) and three IET washers (1). | Install and secure to antenna mount plate (3) and front wall.   | Tools: 7/16 in socket. |
| c. | Two cap screws (2) and two IET washers (1).     | Install and secure to remaining holes located above antenna mount plate (3).  | Tools: 7/16 in socket. |

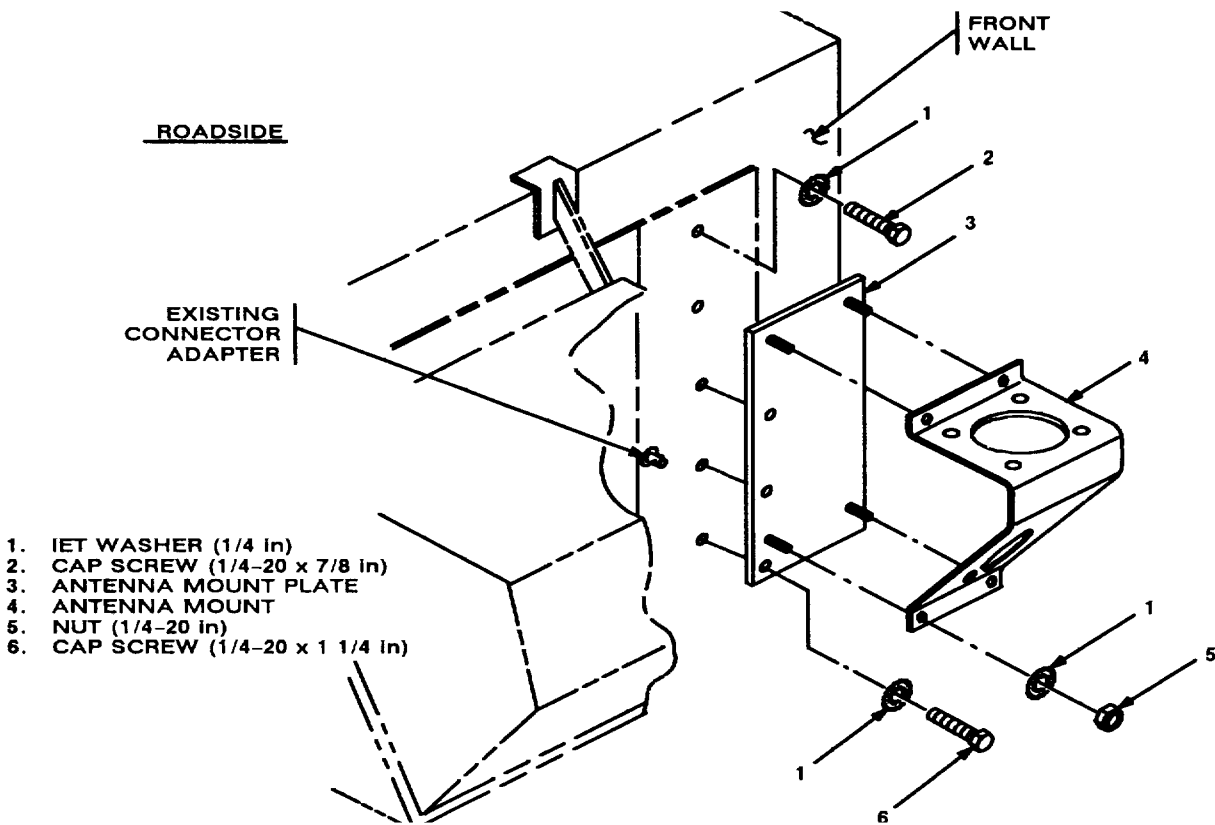


Figure 5-2 (1). Antenna Base Installation: Installing Antenna Mount

## 5.1.1 Installation of Antenna Base. Continued

ITEM	ACTION	REMARKS
d. Antenna mount (4).	Place over existing studs on antenna mount plate (3). See figure 5-2 (1).	
e. Four IET washers (1) and four nuts (5).	Install and secure to antenna mount (4).	Tools: 7/16 in socket.
f. Gasket (4).	Place on antenna mount (5) and aline with mounting holes. See figure 5-2 (2).	
g. Antenna base (1).	Place on top of gasket (4) and antenna mount (5); then aline mounting holes.	
h. Four cap screws (2), eight IET washers (3) and four nuts (6).	Install and secure to antenna base (1) and antenna mount (5).	Tools: 9/16 in socket and 9/16 in open/box wrench.
i. Ground strap (9), two IET washers (7) and machine bolt (8).	Install and secure to existing tapped hole in antenna mount (5).	Tools: 1/2 in socket.

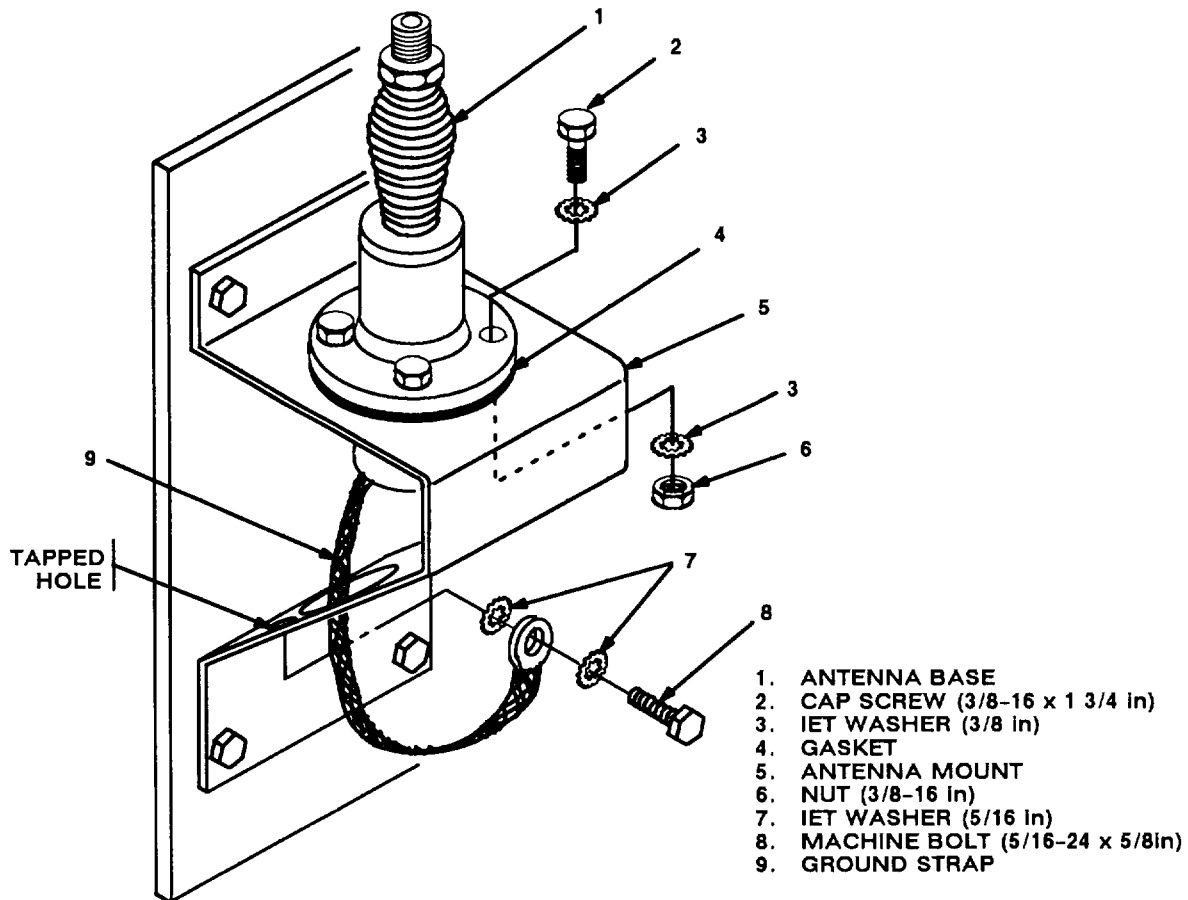
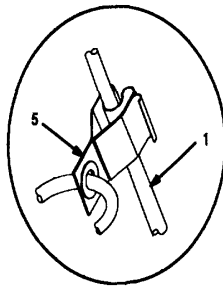
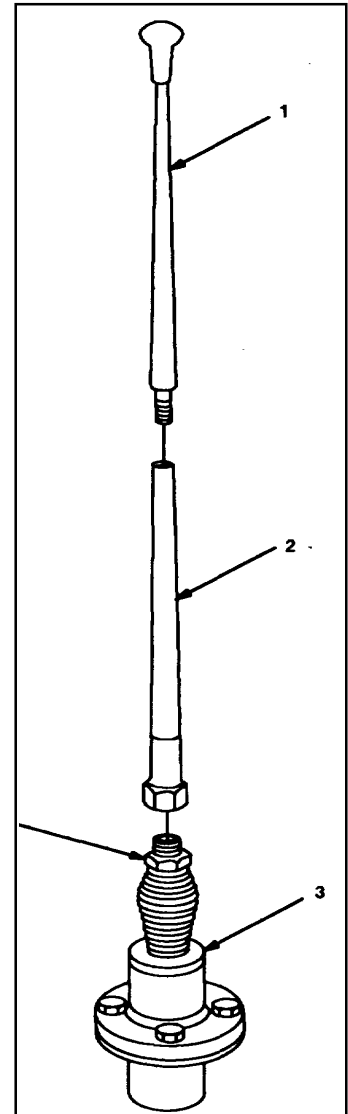


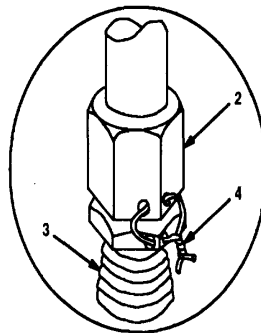
Figure 5-2 (2). Antenna Base Installation: Installing Antenna Base

**5.1.2 Installation of Top Antenna Assembly.** The top portion of the antenna includes a lower element and an upper element (with installed cap). Use the following procedure to assemble, install and tie down all antennas.

ITEM	ACTION	REMARKS
a	Antenna elements (1, 2) Apply silicone compound to element threads and assemble. See figure 5-3.	
b	Antenna element (2) Install and hand-tighten to antenna base (3).	
c	Lock wire (4) Install to antenna element (2) and antenna base (3). See figure 5-3, detail A.  Cut and remove excess wire with diagonal cutting pliers.	
d	Fiber rope assembly (5) Attach clip to antenna element (1). Tie rope to vehicle to position antenna in desired location. See figure 5-3, detail B.	



DETAIL B

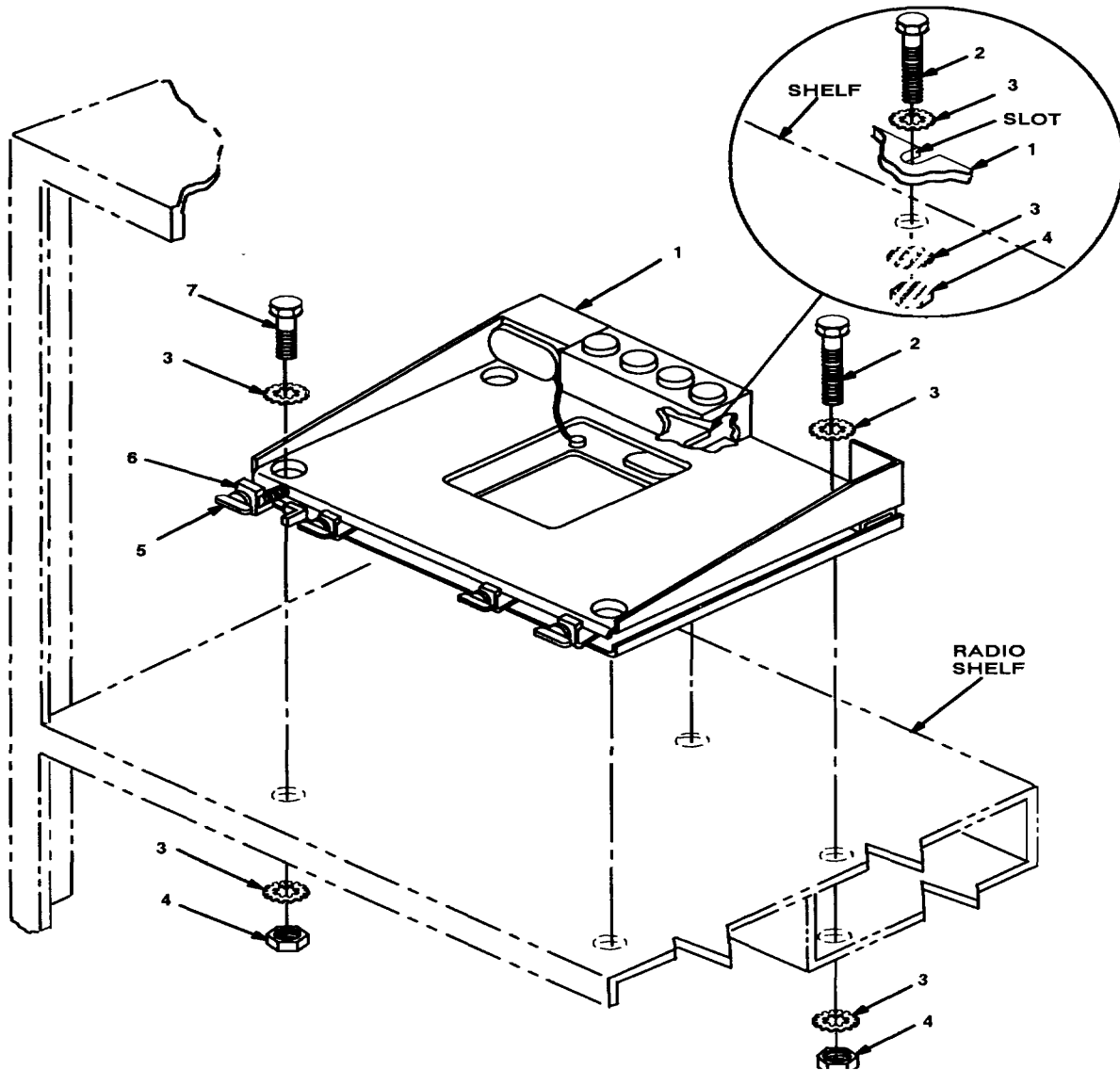


DETAIL A

- 1. ANTENNA ELEMENT (UPPER)
- 2. ANTENNA ELEMENT (LOWER)
- 3. ANTENNA BASE
- 4. LOCK WIRE
- 5. FIBER ROPE ASSEMBLY

*Figure 5-3. Top Antenna Assembly Installation*

**5.2 Installation of Mounting Base, Electrical Equipment MT-6352/VRC (mounting base).** Remove and retain attaching bag of 5/16 in mounting hardware for installation. To insure good electrical grounding, any rust, corrosion or paint around mounting holes in radio shelf should be removed before installing the mounting base. See figure 5-4 and perform the following steps.



1. MOUNTING BASE
2. CAP SCREW (5/16-24 x 2 3/4 In)
3. IET WASHER (5116 In)
4. NUT (5/16- 24 in)
5. THUMBSCREW
6. RIM CLENCHING CLAM
7. CAP SCREW (5/16-24 x 1 in)

Figure 5-4. Mounting Base Installation: Equipment Rack



**5.2 Installation of Mounting Base, Electrical Equipment MT-63521VRC (mounting base).** Continued

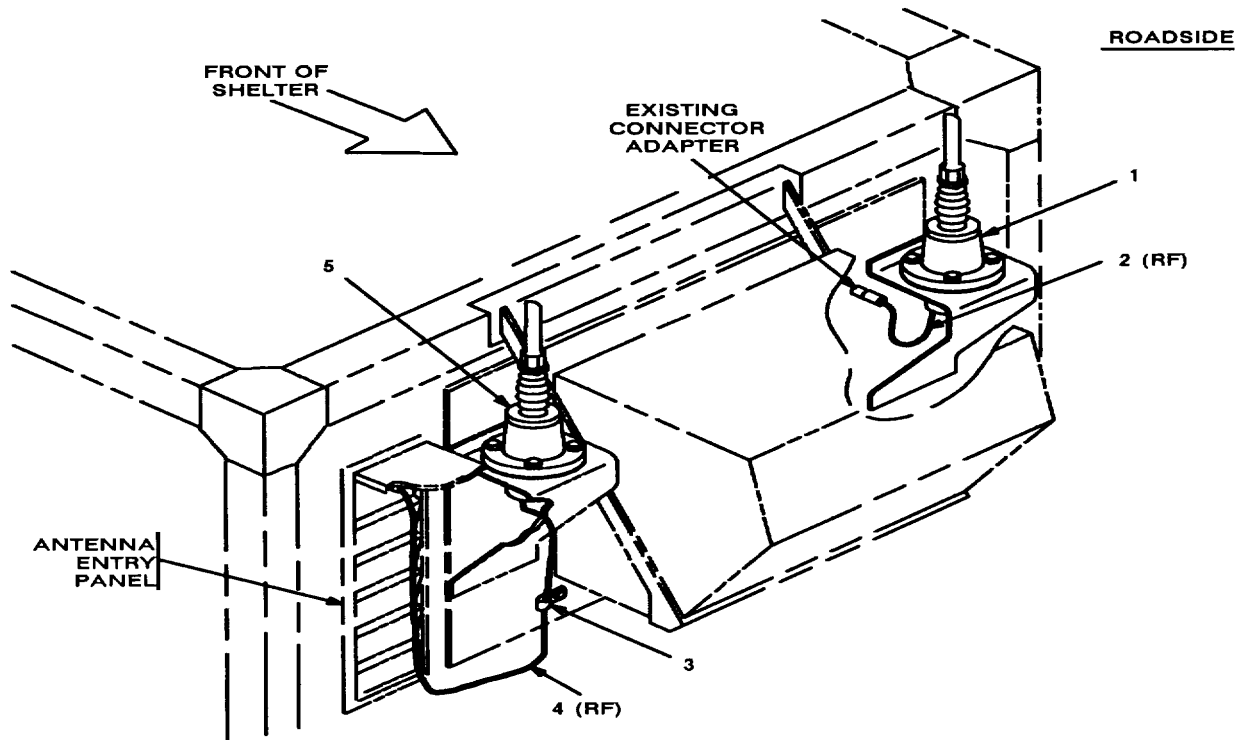
ITEM	ACTION	REMARKS	
<b>NOTE</b>			
Apply a thin coat of adhesive-sealant to both sides of each internal/external-toothed (IET) washer during installation, and to the area of contact where IET washer is to be placed.			
a.	Mounting base (1)	Place on radio shelf over existing holes. See figure 5-4.	
b.	Two outer thumbscrews (5)	Turn ccw until both sets of threads have cleared center of holes.	
c.	Mounting base (1)	Aline three holes and rear slot with matching hole pattern in shelf.	
d.	Two machine bolts (7), four IET washers (3) and two nuts (4).	Install and secure to front holes in mounting base (1) and shelf	Tools: 1/2 in socket and 1/2 in open/box wrench.
e.	Two machine bolts (2), four IET washers (3) and two nuts (4).	Install and secure to right rear hole and slot in mounting base (1) and shelf	Tools: 1/2 in socket and 1/2 in open/box wrench.
f.	Two outer thumbscrews (5)	Tighten and secure to rim clenching clamps (6) and mounting base (1).	

**5.3 Installation of Cables.** To accomplish the installation, leave loop clamps and tiedown straps loose enough to adjust cable slack and allow easy adjustment of equipment. When installation is complete, tighten and secure clamps and tiedown straps.

**WARNING**

Make sure shelter power source is positioned OFF or disconnected before installing cables.

ITEM	ACTION	REMARKS
a. RF cable (2) connector P1.	Connect and secure to antenna base (1) connector J1. See figure 5-5 (1).	
b. RF cable (2) connector P2.	Connect and secure to existing connector adapter in front roadside wall.	
c. RF cable (4) connector P1.	Connect and secure to antenna base (5)	
d. RF cable (4) connector P2.	Connect and secure to antenna entry panel on front curbside wall.	
e. Loop clamp (3) and existing mounting hardware	Wrap clamp around RF cable (4); then install to existing hole in front curbside wall. See figure 5-5 (1) for location(s).	



1. ANTENNA BASE (ROADSIDE)
2. RF CABLE, CG-3855/VRC (2 FT, 0 IN)
3. LOOP CLAMP (114-114 In) (2 FT, 0 IN)
4. RF CABLE, CG-3855/VRC (3 FT, 0 IN)
5. ANTENNA BASE (CURBSIDE)

*Figure 5-5 (1) Cable Installation: Front Wall*

5.3 Installation of Cables. Continued

ITEM	ACTION	REMARKS
f. Existing intercom cable (from AM-1780/VRC connector J501).	Connect and secure to SP cable (5) connector P1. See figure 5-5 (2).	
g. SP cable (5) connector P2.	Connect and secure to mounting base (3) connector J3. See figure 5-5 (2), detail A.	
h. W40 cable (2) connector P1.	Connect and secure to AM-1780/VRC connector J510. See figure 5-5 (2).	
i. W40 cable (2).	Route with existing intercom cable to rear of mounting base (3).	
j. W40 cable (2) connector P2.	Connect and secure to mounting base (3) connector J4.	

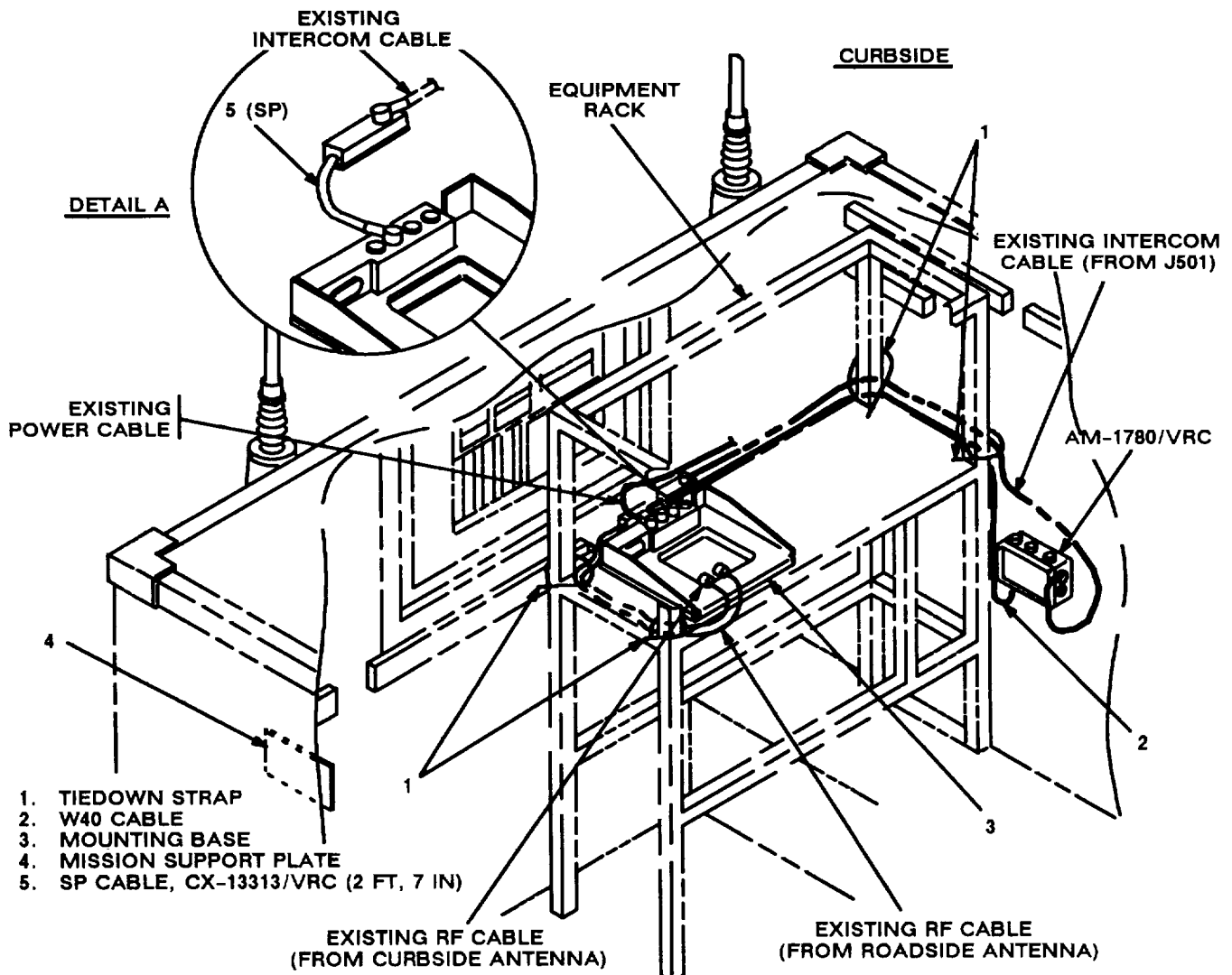


Figure 5-5 (2). Cable Installation: Forward Interior

**5.3 Installation of Cables.** Continued

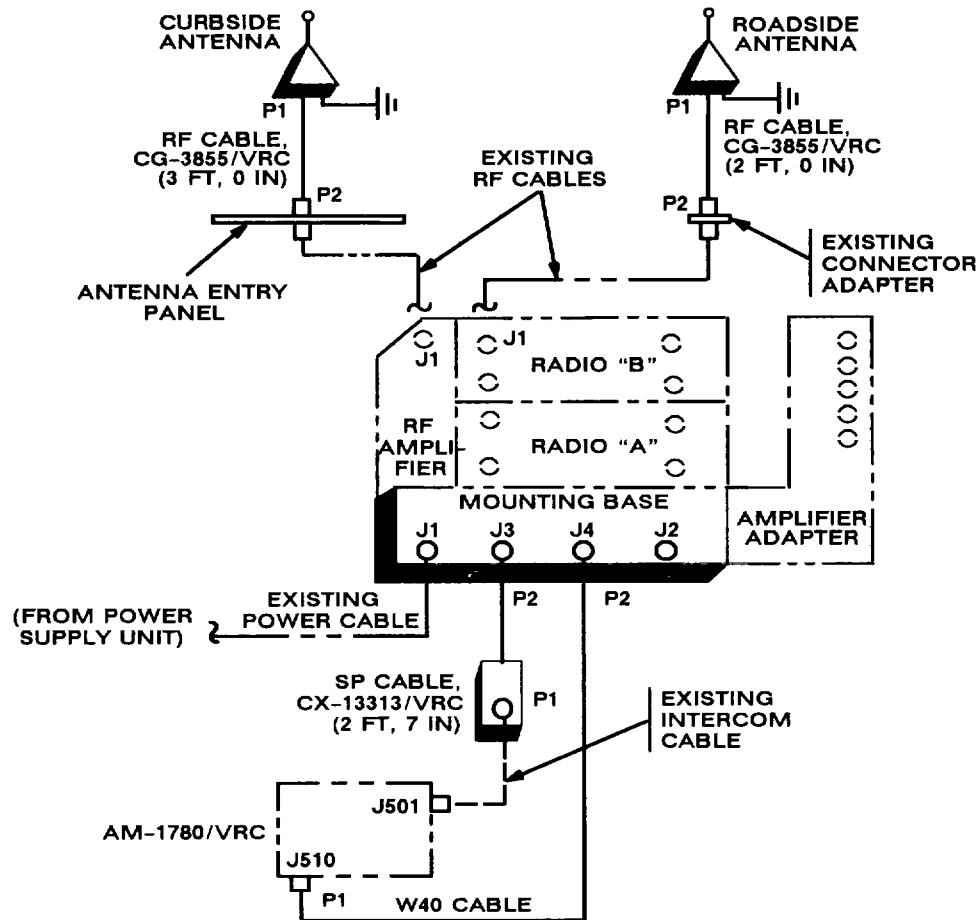
	ITEM	ACTION	REMARKS
k	Existing RF cables (from roadside and curbside antennas).	Position on top of mounting base (3). See figure 5-5 (2).	
l	Two tiedown straps (1)	Install loosely around existing RF cables and equipment rack. See figure 5-5 (2) for location(s).	
m	Two tiedown straps (1)	Install loosely around W40 cable (2) and existing intercom cable and equipment rack.	
n	Existing power cable	Connect and secure to mounting base (3) connector J1.	
o	Mission support plate (4)	Install over existing mission support equipment plate on roadside interior wall. See figure for approximate location.	

**5.4 Installation of MK-24991VRC.** For Radio Set AN/VRC-89/91, install MK-2499/VRC (TSEC/KY-57 security equipment) in the location shown in figure 5-1 (2). Use two machine bolts (5/16-24 x 2 3/4 in) to secure rear of MT-6429/VRC mounting base to shelf.

**5.5 Post-Installation and Checkout.** After equipment is installed and cables are connected, perform the following steps.

ITEM	ACTION	REMARKS
a Equipment	Check for secure mounting. Check for loose parts, connectors and mounting hardware.	
b Cables	Check for proper installation and connection of cables. See figure 5-6 for cable connections. Unused cables should be stowed in appropriate place inside the shelter.	
c Loop clamps	Check that all have been properly installed and tightened.	
d Protective covers	Insure that all installed cables are covered when not in use or connected.	
e Radio issued with shelter	Install and connect cables See TM 11-5820-890-20-1 TM 11-5820-890-20-4 for installation and Operational (OP) Check instructions.	or
f MK line replaceable units	See TM 11-5820-890-20P for Repair Parts and Special Tools List (RPSTL) information.	

5.5 Post-Installation and Checkout. Continued



CABLE ASSEMBLY	CABLE CONN	FROM		TO		
		UNIT	UNIT CONN	CABLE CONN	UNIT	UNIT CONN
Existing power cable		Power supply unit			Mounting base	J1
CG-3855/VRC (3 FT, 0 IN)	P1	Curbside antenna base	J1	P2	Antenna entry panel	
CG-3855/VRC (2 FT, 0 IN)	P1	Roadside antenna base	J1	P2	Existing connector adapter	
Existing RF cable		Existing connector adapter			Radio "B"	J1

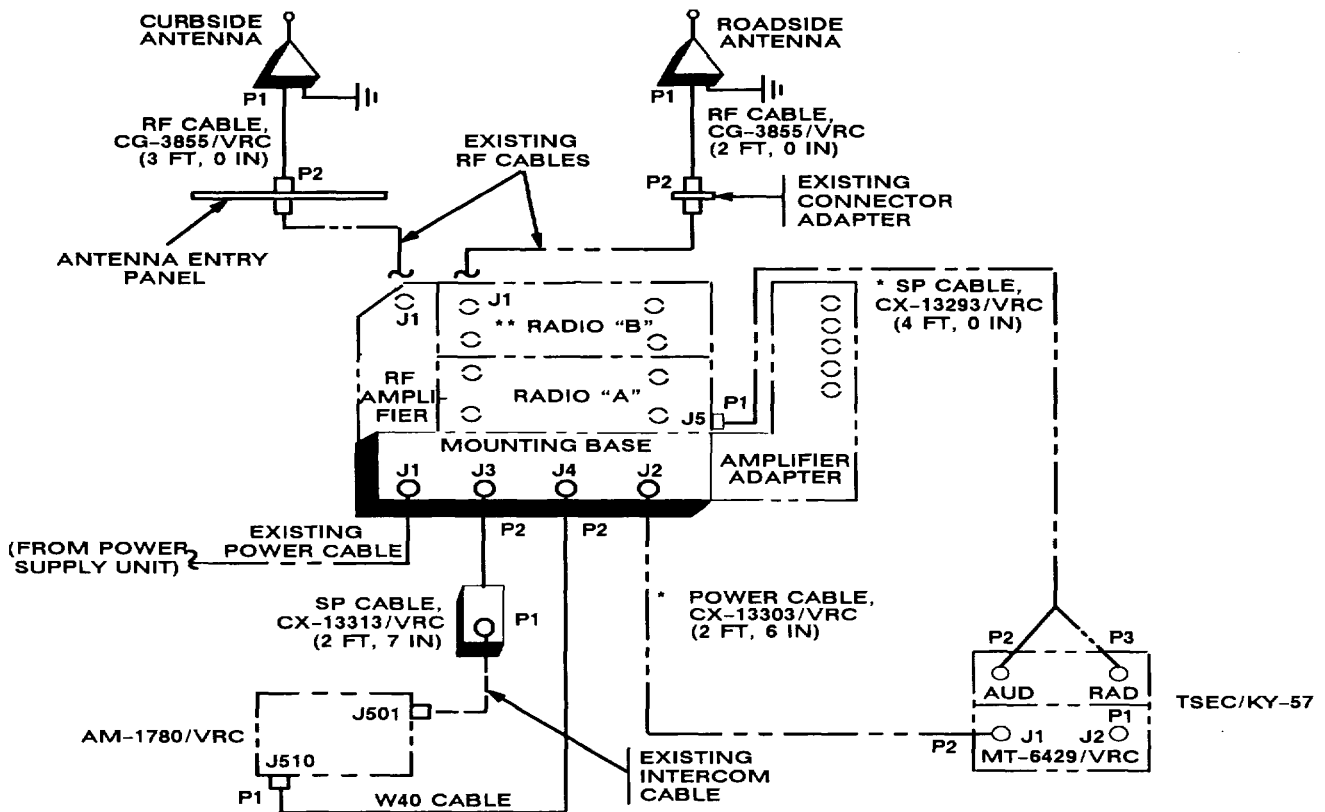
Figure 5-6 (1). Cable Diagram: For ANIVRC-89A191A

5.5 Post-Installation and Checkout. Continued

CABLE ASSEMBLY	FROM			TO		
	CABLE CONN	UNIT	UNIT CONN	CABLE CONN	UNIT	UNIT CONN
Existing RF cable		Antenna entry panel			RF amplifier	J1
CX-13313/VRC (2 FT, 7 IN)	P2	Mounting base	J3	P1	Existing intercom cable	
Existing intercom cable		CX-13313/VRC (2 FT, 7 IN)	P1		AM-1780/VRC	J501
W40 cable	P1	AM-1780/VRC	J510	P2	Mounting base	J4

Figure 5-6 (1). Cable Diagram: For ANIVRC-89A/91A Continued

5.5 Post-Installation and Checkout. Continued



\*NOT SUPPLIED IN THIS MK.

CABLE ASSEMBLY	FROM		TO		
	CABLE CONN	UNIT	UNIT CONN	CABLE CONN	UNIT CONN
Existing power cable		Power supply unit			J1
CG-3855/VRC (3 FT, 0 IN)	P1	Curbside antenna base	J1	P2	Antenna entry panel
CG-3855/VRC (2 FT, 0 IN)	P1	Roadside antenna base	J1	P2	Existing connector adapter
Existing RF cable		Existing connector adapter			J1
Existing RF cable		Antenna entry panel			J1

Figure 5-6 (2). Cable Diagram: For ANIVRC-89/91



5.5 Post-Installation and Checkout. Continued

CABLE ASSEMBLY	FROM			TO		
	CABLE CONN	UNIT	UNIT CONN	CABLE CONN	UNIT	UNIT CONN
CX-13313/VRC (2 FT, 7 IN)	P2	Mounting base	J3	P1	Existing intercom cable	
Existing intercom cable		CX-13313/VRC (2 FT, 7 IN)	P1		AM-1780/VRC	J501
W40 cable	P1	AM-1780/VRC	J510	P2	Mounting base	J4
*CX-13303/VRC (2 FT, 6IN)	P1	Mounting base	J2	P2	MT-6429/VRC "A"	J1
* CX-13293/VRC (4 FT, 0 IN)	P1	Radio "A"	J5	P2 P3	TSEC/KY-57 "A"	AUD RAD

\* Not supplied in this MK.

Figure 5-6 (2). Cable Diagram: For ANIVRC-89/91 Continued

## APPENDIX A

## REFERENCES

---

AMDF	Army Master Data File (Microfiche)
AR 710-2	Supply Policy Below the Wholesale Level as Contained in Unit Supply UPDATE
AR 725-50	Requisitioning, Receipt and Issuing System in UPDATE
DA Pam 25-30	Consolidated Index of Army Publications (Microfiche)
DA Pam 710-2-1	Using Unit Supply System Manual Procedures as Contained in Unit Supply UPDATE
SB 11-131-2	Vehicular Radio Sets and Authorized Installations (SINGARS)
TM 11-5820-890-10-1	Operator's Manual (ICOM Radio Sets)
TM 11-5820-890-10-3	Operator's Manual (Non-ICOM Radio Sets)
TM 11-5820-890-20-1	Unit Maintenance Manual (ICOM Radio Sets, Vol. 1)
TM 11-5820-890-20-2	Unit Maintenance Manual (ICOM Radio Sets, Vol. 2)
TM 11-5820-890-20-3	Unit Maintenance Manual handbook (ICOM Radio Sets)
TM 11-5820-890-20-4	Unit Maintenance Manual (Non-ICOM Radio Sets)
TM 11-5820-890-20P	Repair Parts and Special Tools List

A-1/(A-2 blank)

**TB 11-5820-890-20-40**

By Order of the Secretary of the Army:

GORDON R. SULLIVAN  
General, United States Army  
Chief of Staff

Official:   
MILTON H. HAMILTON  
Administrative Assistant to the  
Secretary of the Army  
06082

**DISTRIBUTION:**

To be distributed in accordance with DA Form 12-36-E, block 9620 requirements for TB 11-5820-890-20-40.

\*U.S. GOVERNMENT PRINTING OFFICE: 1994 - 510-106/00108

RECOMMENDED CHANGES TO EQUIPMENT TECHNICAL PUBLICATIONS



THEN... JOT DOWN THE DOPE ABOUT IT ON THIS FORM, CAREFULLY TEAR IT OUT, FOLD IT AND DROP IT IN THE MAIL!

**SOMETHING WRONG WITH THIS PUBLICATION?**

FROM: (PRINT YOUR UNIT'S COMPLETE ADDRESS)

DATE SENT

PUBLICATION NUMBER

PUBLICATION DATE

PUBLICATION TITLE

BE EXACT... PIN-POINT WHERE IT IS

PAGE NO.	PARA-GRAPH	FIGURE NO.	TABLE NO.
----------	------------	------------	-----------

IN THIS SPACE TELL WHAT IS WRONG AND WHAT SHOULD BE DONE ABOUT IT:

TEAR ALONG PERFORATED LINE

PRINTED NAME, GRADE OR TITLE, AND TELEPHONE NUMBER

SIGN HERE:

DA FORM 2028-2 JUL 79

PREVIOUS EDITIONS ARE OBSOLETE.

P.S.—IF YOUR OUTFIT WANTS TO KNOW ABOUT YOUR RECOMMENDATION MAKE A CARBON COPY OF THIS AND GIVE IT TO YOUR HEADQUARTERS.

